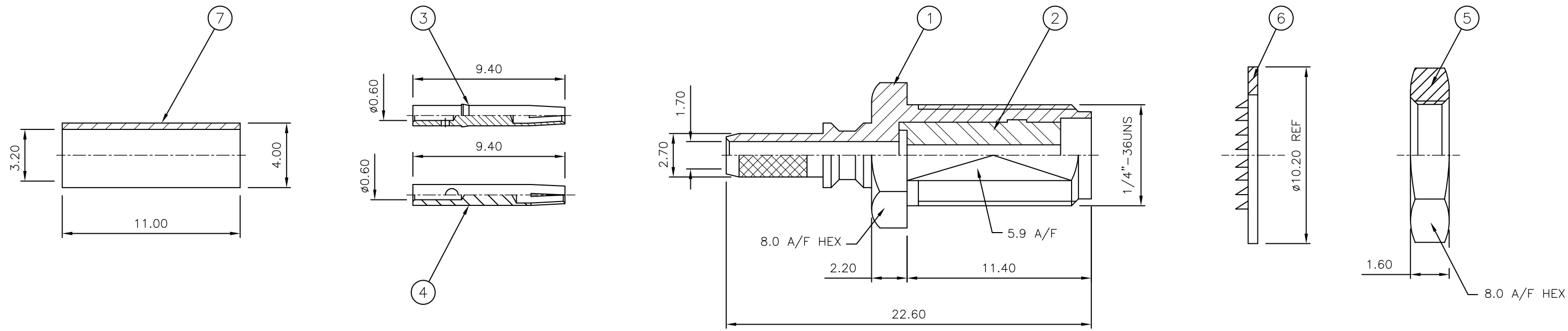


THIS DRAWING IS UNPUBLISHED. RELEASED FOR PUBLICATION APRIL, 2004. BY TYCO ELECTRONICS CORPORATION. ALL RIGHTS RESERVED.

LOC	DIST	REVISIONS			
P	LTR	DESCRIPTION	DATE	DWN	APVD
E	B	C	ECR-07-027685	16NOV07	JMS FWK

- NOTES:**
- 1 SINGLE PACK IN ACCORDANCE WITH SPEC 107-3275
  - 2 100 BULK PACK IN ACCORDANCE WITH SPEC 107-3275
  - 3 GOLD PLATING
  - 4 PASSIVATED
  - 5 WHITE BRONZE PLATING
  - 6 PLATING AS PER BODY, EXCEPT FOR PASSIVATED WHICH IS NICKEL PLATED
  - 7 HAND TOOL 9-1478240-0
  - 8 DIE SET 9-1478248-0
  - 9 **ELECTRICAL CHARACTERISTICS**  
 FREQUENCY RANGE:  
 BRASS BODY: DC - 6 GHz  
 STAINLESS STEAL (PASSIVATED): DC - 12.4 GHz  
 STAINLESS STEAL (GOLD): DC - 18 GHz  
 NOMINAL IMPEDANCE: 50 Ohm  
 INSULATION RESISTANCE: 1000 MOhm  
 WORKING VOLTAGE: 250 Volts RMS at Sea Level  
 DIELECTRIC WITHSTAND VOLTAGE: 750 Volts RMS Max  
 CONTACT RESISTANCE:  
 CENTRE CONTACT: 6.00 mOhm Max  
 OUTER CONTACT: 1.00 mOhm Max  
 VSWR @ 4GHz: 1.35:1  
 INSERTION LOSS dB @ x 1.5 GHz: 0.30 Max
  - 10 **MECHANICAL CHARACTERISTICS**  
 COUPLING NUT RETENTION FORCE: N/A  
 CABLE RETENTION FORCE:  
 RG174A/U, 188A/U, 316/U, URM95: 267N Min  
 CLAMP NUT RECOMMENDED TORQUE: 0.6N  
 MOUNT NUT RECOMMENDED TORQUE: 0.75N  
 DURABILITY: 500 Cycles Min
  - 11 **ENVIRONMENTAL CHARACTERISTICS**  
 OPERATING TEMPERATURE: -65 to +165 DegC
  - 12 FOR TECHNICAL DATA REFER TO YOUR LOCAL TYCO ELECTRONICS SALES OFFICE
  - 13 ALL DIMENSIONS ARE NOMINAL FOR REFERENCE ONLY UNLESS OTHERWISE STATED



QTY	1	2	3	4	5	6	7	8	9	10	11	12	13	14	15	16	17	18	MATERIAL	DESCRIPTION	ITEM
1	1	1	1	1	1	1	1	1	1	1	1	1	1	1	1	1	1	1	BRASS	CRIMP FERRULE	7
1	1	1	1	1	1	1	1	1	1	1	1	1	1	1	1	1	1	1	STAINLESS STEEL	LOCKWASHER	6
1	1	1	1	1	1	1	1	1	1	1	1	1	1	1	1	1	1	1	BRASS	HEX NUT	5
-	-	1	1	-	-	-	-	-	-	-	-	-	-	-	-	-	-	-	BRASS	HEX NUT	5
-	-	-	-	1	1	1	1	1	1	1	1	1	1	1	1	1	1	1	STAINLESS STEEL	HEX NUT	5
-	-	-	-	1	1	1	1	1	1	1	1	1	1	1	1	1	1	1	BERYLLIUM COPPER	CENTRE SOCKET	4
1	1	1	1	1	1	1	1	1	1	1	1	1	1	1	1	1	1	1	BERYLLIUM COPPER	CENTRE SOCKET	3
1	1	1	1	1	1	1	1	1	1	1	1	1	1	1	1	1	1	1	PTFE	INSULATOR	2
1	1	-	-	-	-	-	-	-	-	-	-	-	-	-	-	-	-	-	BRASS	BODY	1
-	-	1	1	-	-	-	-	-	-	-	-	-	-	-	-	-	-	-	BRASS	BODY	1
-	-	-	-	1	1	-	-	-	-	-	-	-	-	-	-	-	-	-	STAINLESS STEEL	BODY	1
-	-	-	-	-	-	1	1	-	-	-	-	-	-	-	-	-	-	-	STAINLESS STEEL	BODY	1
4--1	4--0	3--1	3--0	2--1	2--0	1--1	1--0														

THIS DRAWING IS A CONTROLLED DOCUMENT.

DWN: R.SMITH 05FEB04  
 CHK: S.PARLOW 05FEB04  
 APVD: F.WHEELER-KING 05FEB04

TOLERANCES UNLESS OTHERWISE SPECIFIED:

0 PLC	±
1 PLC	±
2 PLC	±
3 PLC	±
4 PLC	±
ANGLES	±
FINISH	-

NAME: SMA BULKHEAD JACK NON CAPTIVE SOLDER CONTACT CRIMP ATTACHMENT  
 PRODUCT SPEC: RG174A/U, 188A/U, 316/U, KX3B, KX22A, URM95  
 APPLICATION SPEC: SEE PAGE 2

SCALE: A2  
 CAGE CODE: 00779  
 DRAWING NO: 1478955  
 RESTRICTED TO: -

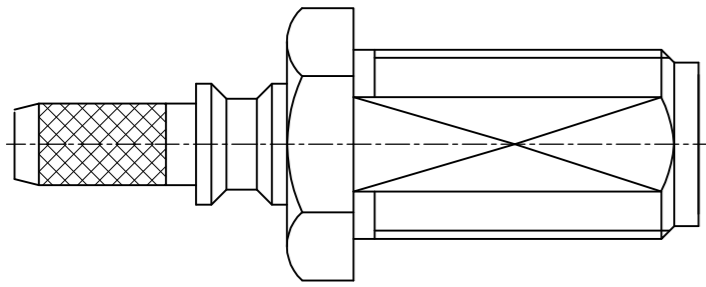
CUSTOMER DRAWING  
 SCALE: NTS  
 SHEET: 1 of 2  
 REV: C

THIS DRAWING IS UNPUBLISHED. RELEASED FOR PUBLICATION APRIL , 2004.  
 © COPYRIGHT 2004 BY TYCO ELECTRONICS CORPORATION. ALL RIGHTS RESERVED.

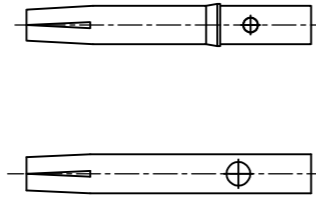
LOC		DIST		REVISIONS			
P	LTR	DESCRIPTION	DATE	DWN	APVD		
		SEE SHEET 1					

COMPONENTS

MAIN BODY (ITEM 1,2)



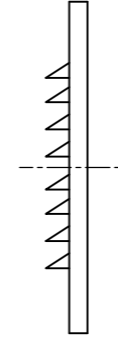
CENTRE SOCKET (ITEM 3,4)



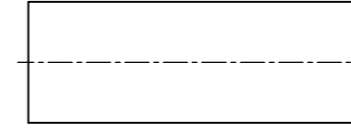
NEX NUT (ITEM 5)



LOCKWASHER (ITEM 6)



CRIMP FERRULE (ITEM 7)

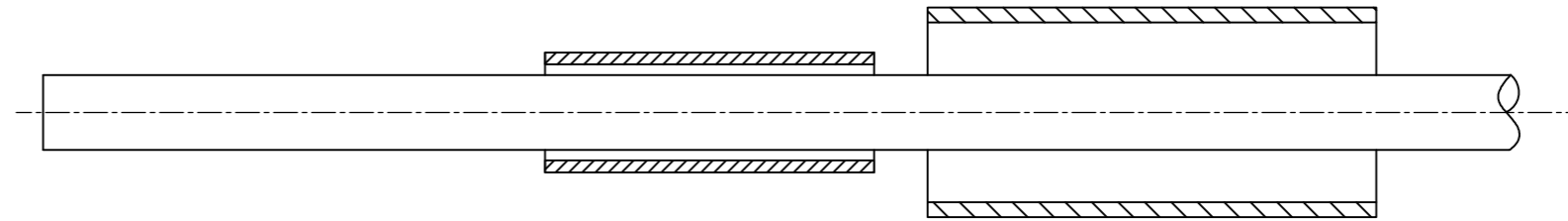


ASSEMBLY INSTRUCTIONS

RG174A/U, 188A/U, 316/U, KX3B, KX22A, URM95

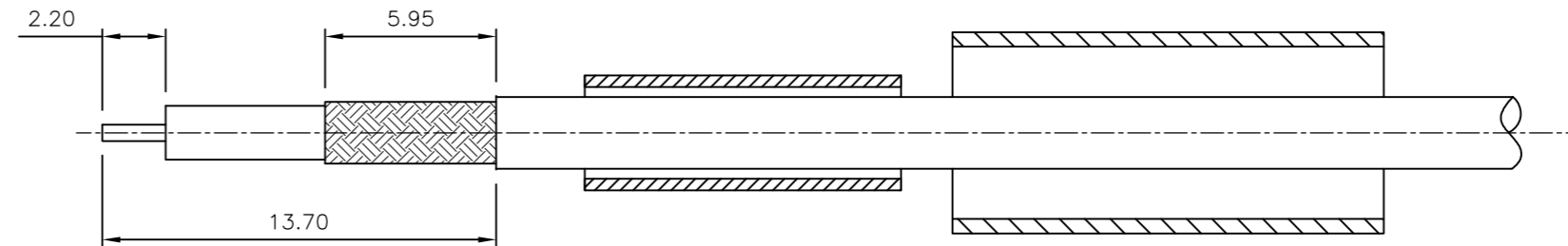
STEP 1

- IF USING HEATSHRINK SLIDE OVER CABLE (HEATSHRINK NOT SUPPLIED AND USED AT CUSTOMER DISCRETION)
- SLIDE METAL CRIMP FERRULE OVER CABLE



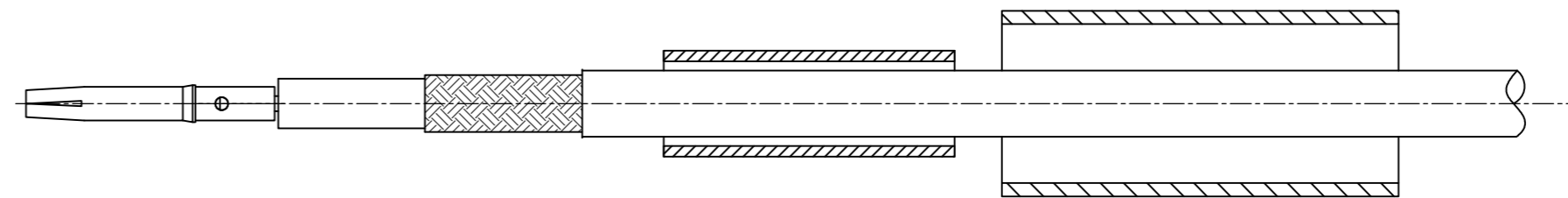
STEP 2

- STRIP CABLE TO DIMENSIONS AS SHOWN



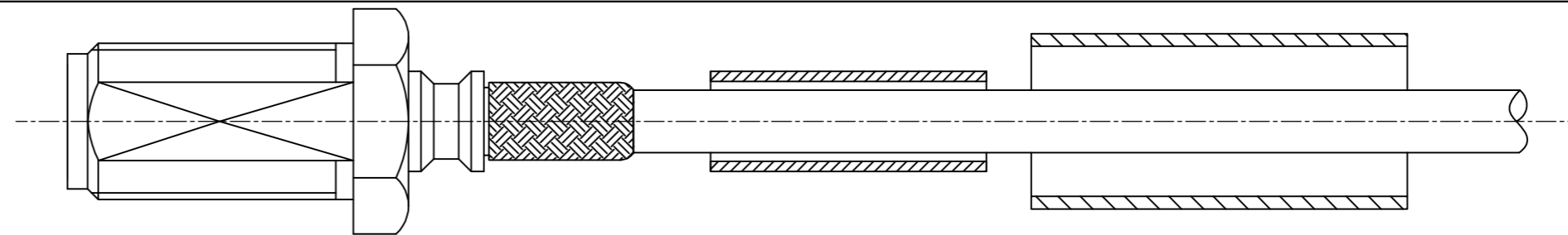
STEP 3

- TIN CENTRE CONTACT
- FIT CONTACT OVER CONDUCTOR
- SOLDER CONTACT (ITEM 3 OR 4 AS SUPPLIED) TO TINNED CENTRE CONDUCT, DO NOT OVER HEAT



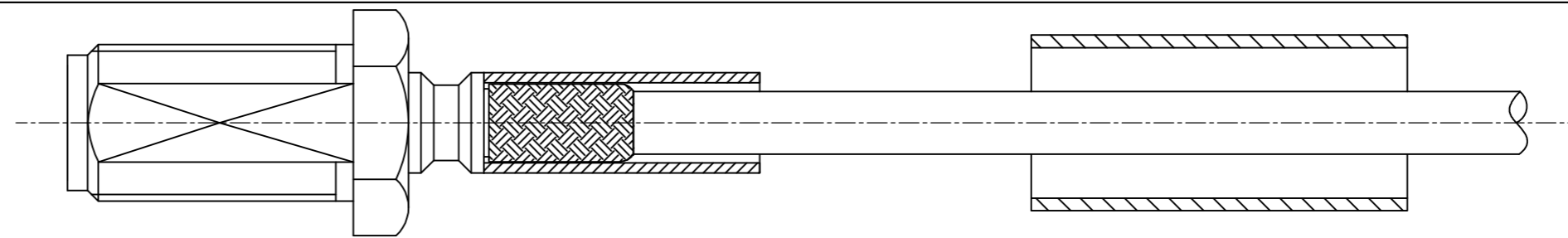
STEP 4

- PRESS SUB-ASSEMBLY INTO BODY UNTIL CONTACT IS FULLY LOCATED
- ENSURE THAT KNURLED HOUSING INSERTS BETWEEN THE DIELECTRIC AND CABLE BRAID

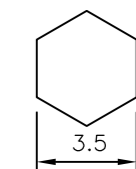


STEP 5

- SLIDE CRIMP FERRULE ALONG THE CABLE UNTIL IT BUTTS AGAINST THE BODY HOUSING
- CRIMP USING TOOL AS NOTED ON PAGE 1
- CRIMP DIMENSION AS SHOWN

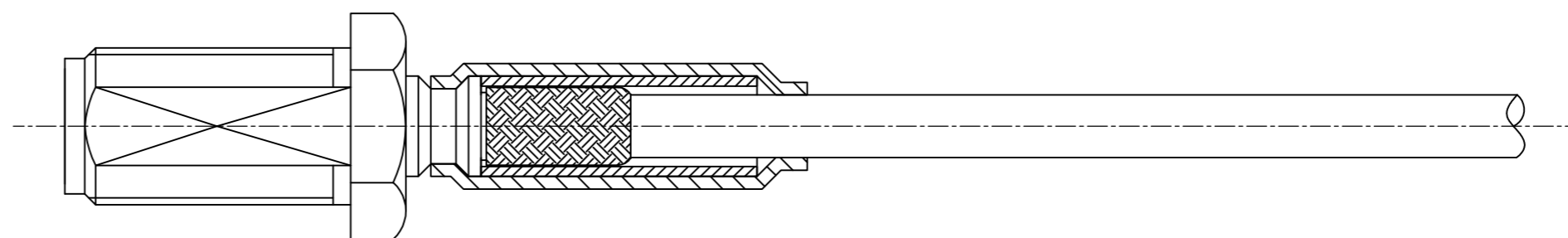
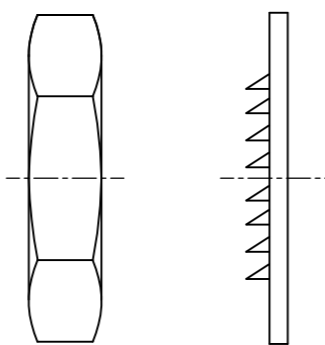


RECOMMENDED CRIMP SLEEVE A/F HEX

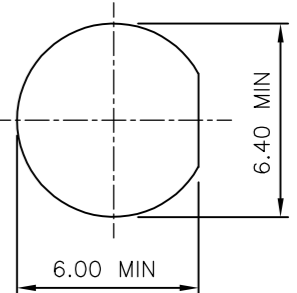


STEP 5

- IF USING HEATSHRINK PLACE OVER CONNECTOR AS SHOWN AND APPLY
- FOR BULKHEAD MOUNTING PREPARE HOLE AS SHOWN
- USE LOCKWASHER (ITEM 6) AND HEX NUT (ITEM 5) TO SECURE CONNECTOR



RECOMMENDED MOUNTING HOLE DIM'S



THIS DRAWING IS A CONTROLLED DOCUMENT.		DWN R.SMITH 05FEB04	Tyco Electronics Corporation Bideford, UK, EX39 4HE	
DIMENSIONS: mm		CHK S.PARLOW 05FEB04	NAME SMA BULKHEAD JACK NON CAPTIVE SOLDER CONTACT CRIMP ATTACHMENT	
TOLERANCES UNLESS OTHERWISE SPECIFIED:		APVD F.WHEELER-KING 05FEB04	PRODUCT SPEC 108-3460	
0 PLC ± -		APPLICATION SPEC 411-3276		
1 PLC ± -		WEIGHT -		
2 PLC ± -		SIZE A2 CAGE CODE 00779 C=1478955		
3 PLC ± -		DRAWING NO 1478955		
4 PLC ± -		RESTRICTED TO -		
ANGLES ± -		SCALE NTS SHEET 2 OF 2 REV C		
FINISH -		CUSTOMER DRAWING		

1478955